

The World's Only Perfect Animal Food  
CHEMICAL ANALYSIS

PROTEIN

7.1 GRAMS PER OZ.

Standard chemical analysis identifies only 18 of the 22 amino acids present in pollen.

Cystine	36.855
Lysine	366.360
Histidine	138.590
Arginine	292.530
Aspartic	542.440
Threonine	236.836
Serine	595.040
Glutamic	505.520
Proline	267.520
Glycine	309.560
Alanine	250.562
Valine	94.004
Methionine	230.040
Isoleucine	577.720
Leucine	139.440
Tyrosine	238.850
Phenylalanine	49.700
Tryptophan	

MISC.

Carbohydrates	5.15
Fiber	1.02
Refining Sugars	8.25
Ash	.65
CALORIES PER OUNCE	90

VITAMINS

A-239,470 I.U.**	.031
Alpha Carotene	.122
Beta Carotene	1.98
B1 (Thiamine)	4.59
B2 (Riboflavin)	2.61
B3 (Niacin)	1.19
B6 (Pyridoxine)	.002
B12 (Cyanocobalamin)	.002
Biotin	.201
Folic Acid	1.98
Pantothenic Acid	1.304
C-(Ascorbic Acid)	
D-9 I.U.**	
E-2,194 I.U.**	

ENZYMES

UITS PER GRAM	
Amylase (USP Units)	2,550
(needed to break down starch)	
Protease (USP Units)	64,400
(needed to split proteins)	
Lipase (Ums Units)	.085
(needed to emulsify fats)	
PATRY ACIDS	2.807 GRAM/OZ
Essential fatty acids, with carbohydrates and sugars, supply the energy requirements.	
CRISTERSON	0 Percent
Bee pollen contains a higher content (11) of the essential unsaturated fatty acids as opposed to saturated (9).	

MINERALS

Calcium	42.383
Iron	2,118
Potassium	158.675
Phosphorus	121.706
Sodium	2.693
Iodine (in MCGs)	6.257
Magnesium	1.995
Zinc	1.460
Copper	.221
Barium	.804
Boron	.136
Chromium (less than)	.019
Manganese	27.675
Selenium	.094
Selenium	.0280
Molybdenum	4.500
Germanium	13.5000
Thorium	3.000
Calcium	.0001
Phosphorus	.0001

VITAMINS Cont.  
RUTIN—Abundant (Not measured in analysis.) Of great importance for capillary strength.  
ENZYMES. Active enzymes are needed to digest and assimilate nutrients. Chemical analysis measures only three of the many present in bee pollen.

NOTE: Bee pollen also contains elements science is not yet able to solve and identify. Some authorities believe it is precisely these elements, often called the "magic" of the bee, which make bee pollen so effective.

BEES POLLEN AS A SUPERIOR SUPPLEMENT

Bee pollen is a complete food. It contains all the nutrients needed to sustain life. Bee pollen provides more essential amino acids than any other plant foods.

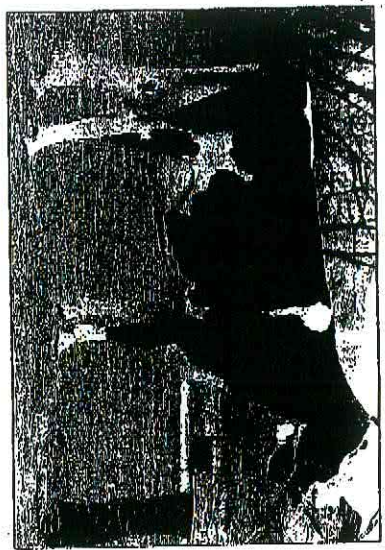
Big weight gains were observed in calves given bee pollen mixed with regular feed. Calves from cows fed bee pollen were more resistant to infection than calves from cows who were not. Also, bee pollen has been used with young cattle, poultry and swine and the results have shown an increase in weight, resistance to disease and overall health. Bee pollen seems to stimulate growth and activity in young animals.

Along with its protein content, bee pollen contains natural hormonal substances which stimulate and nourish the reproductive systems. We find that bee pollen contains a hormone similar to the pituitary hormone, gonadotropin, which activates the sex glands.

There are many written reports on the powerfully potent action bee pollen exerts on a variety of sexual dysfunctions. This perfect food from the beehive has the seemingly miraculous ability to restore and rejuvenate tired and/or aging sex glands of both male and female animals.

A study by Drs. Salajan and Batem in Europe dealt with the effect of bee pollen on ovulation in test animals. They obtained increased ovulation, greater strength during incubation, and improvement in the quality of eggs by feeding pollen.

The application of bee pollen is recommended whenever the end result is obtaining eggs for reproduction.



Dear Bob,

When I bought "Bee Pollen" it was just my horse, but after discussing it with you I decided to try it on some legions of Holstein cattle here. I am finding for the foreign market in soft horses embryos.

I put "Black Edo" and a heifer "Greenleaf" on "Bee Pollen" in July '94 feeding 5 or 6 ounces per day on top of their feed rations. On their next check in early September '94, Black Edo made 30 lbs. embryos and Greenleaf made 15 lbs. embryos = 45 embryos from 2 cows on the same day.

I think it is time getting grass for them.

John G. Bush

USA • CANADA 537130

USA • CANADA

USA • CANADA  
1-800-875-0096